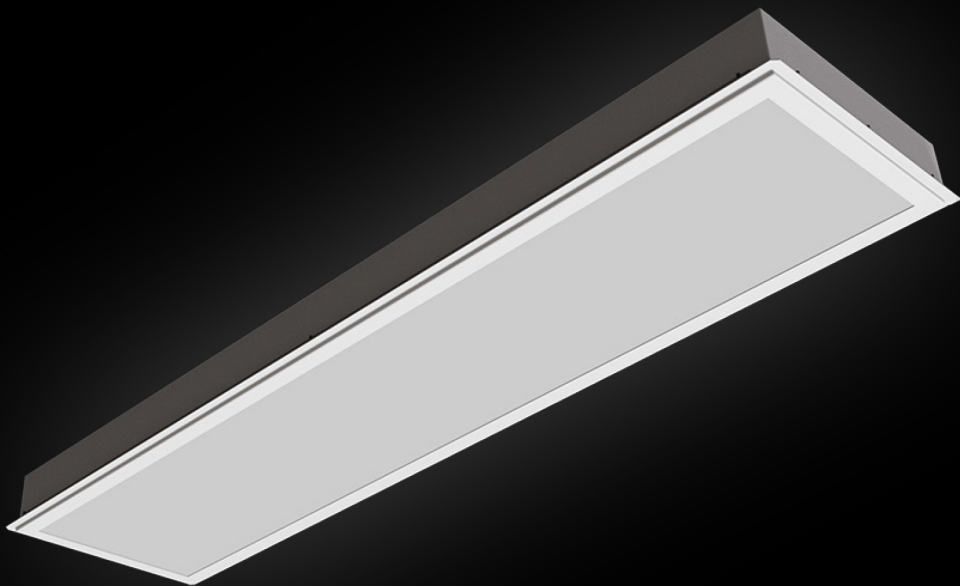


LEDUK

TEGRA - SAS130 CEILINGS



ABOUT US

LED UK is an International supplier of LED lighting technology. We specialise in complete energy efficient lighting solutions for both new and retrofit applications. We provide the highest quality LED based products by integrating premium components to ensure reliability and optimum performance.

Our service delivers a full bespoke package from site surveys, lighting design, the provision of leading edge technology and installation.

TEGRA - SAS130 CEILINGS

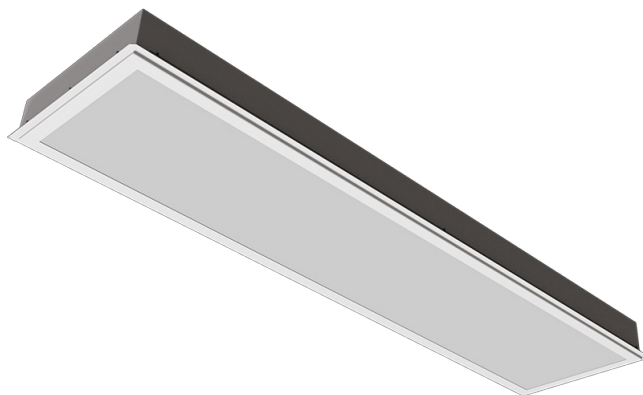
At LED UK we provide a comprehensive range of lighting options for all your commercial applications each tailored to meet the operating and design parameters required.

Lighting design services are available to ensure designs meet BS EN 12464-1:2011, and Society of Light and Lighting: Code for Lighting 2012. We can also provide a cost of ownership analysis to illustrate savings which can be made versus conventional lighting.

From first point of contact to final sign off we aim to support our customers through the complete process so all details are fully dealt with to maximise performance. Within this brochure we have included our complete Tegra for SAS130 Ceilings Range of LED Downlights. To view our full range of LED products please visit www.led.uk.

TEGRA 295 X 1195

- Architectural appearance - screwless smooth bezel
- High transmittant frosted lens
- Instant on - no flicker
- Environmentally Friendly - No mercury or lead enters the environment
- No RF and electronic magnetic interference
- Over 50,000 hours life span



The Tegra LED panel is a bespoke modular luminaire designed to fit in to SAS130 ceilings. The body is made from powder coated steel giving a screwless appearance from under the ceiling. The diffuser is made from high efficiency PMMA which gives the luminaire optimum performance.

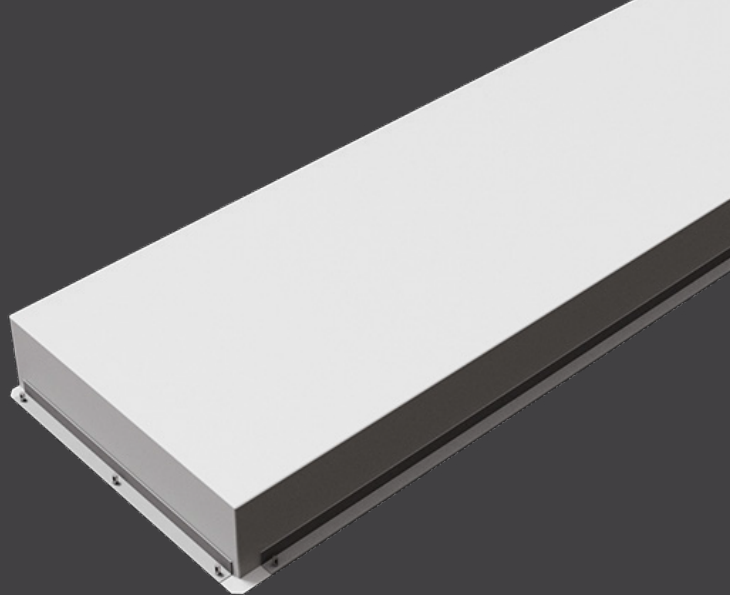
The Tegra has a lifespan of over 50,000 hours and produces an efficacy of 114 lm/W.

TEG-3-295X1195		-XX	-X	-XX	-X	-X
Tegulation						
No Tegulation	00					
4mm Tegulation	04					
8mm Tegulation	08					
Air Handling						
No Air Handling	0					
10 Litres per Second	1					
20 Litres per Second	2					
30 Litres per Second	3					
40 Litres per Second	4					
Colour Temperature						
3000K (Warm White)	3K					
4000K (Neutral White)	4K					
5000K (Cool White)	5K					
Dimming						
Fixed output	0					
1-10V Dimming	1					
DALI Dimming	2					
Switch Dimming	4					
Emergency						
Not Required	0					
3 Hour Facility	1					
3 Hour Self Test	2					
3 Hour Central Test	3					

Example of Code:

TEG-3-295X1195-00-0-3K-0-0

Tegulation:	No Tegulation
Air Handling:	No Air Handling
Colour Temp.:	3000K
Dimming:	Fixed output
Emergency:	Not Required

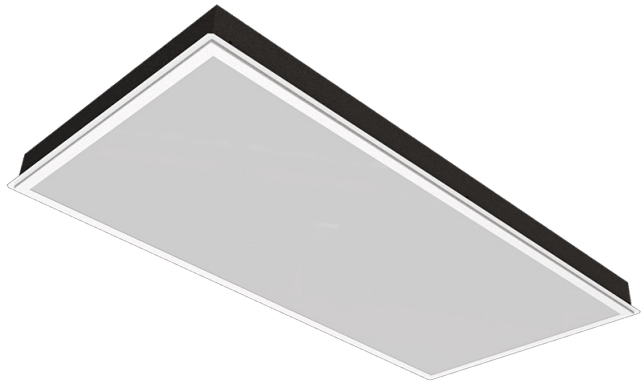


Tegra 295 x 1195	
Power	70 W
Dimensions	295 x 1195 x 85mm
Weight	15 kg
Installation	SAS130 Ceiling
Voltage	220-240Vac 50/60Hz

Performance	
Power	70 W
Exit Lumens (lm)	3,968 lm
Efficiency	113.4 lm/cW
Colour Rendering	Ra>80
Colour Temperature	3000K / 4000K / 5000K
Dimming	1-10V / DALI / Switch Dimming
Operating Temp.	-40°C to 50°C
Emergency	3 Hour Facility 3 Hour Self Test 3 Hour Central Test
Warranty	5 Years

TEGRA 595 x 1195

- Architectural appearance - screwless smooth bezel
- High transmittant frosted lens
- Instant on - no flicker
- Environmentally Friendly - No mercury or lead enters the environment
- No RF and electronic magnetic interference
- Over 50,000 hours life span



The Tegra LED panel is a bespoke modular luminaire designed to fit in to SAS130 ceilings. The body is made from powder coated steel giving a screwless appearance from under the ceiling. The diffuser is made from high efficiency PMMA which gives the luminaire optimum performance.

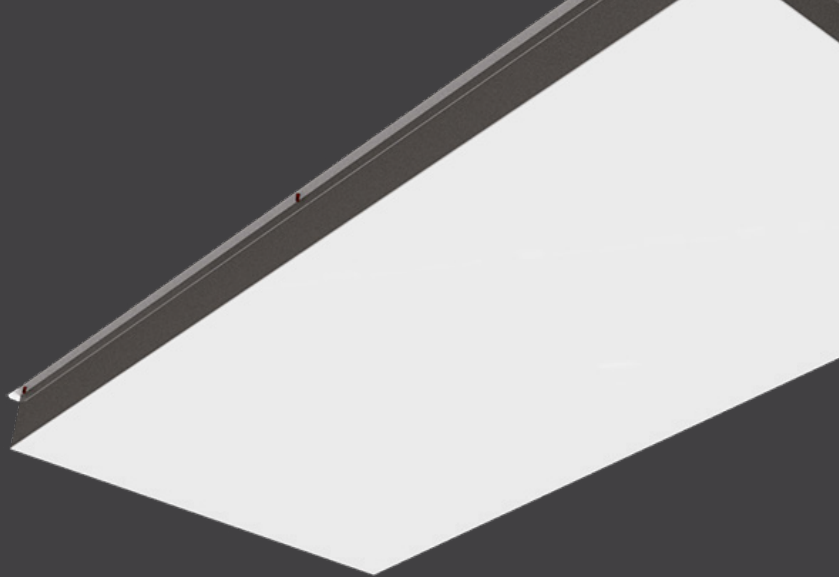
The Tegra has a lifespan of over 50,000 hours and produces an efficacy of 114 lm/W.

TEG-3-595X1195		-XX	-X	-XX	-X	-X
Tegulation						
No Tegulation	00					
4mm Tegulation	04					
8mm Tegulation	08					
Air Handling						
No Air Handling	0					
10 Litres per Second	1					
20 Litres per Second	2					
30 Litres per Second	3					
40 Litres per Second	4					
Colour Temperature						
3000K (Warm White)	3K					
4000K (Neutral White)	4K					
5000K (Cool White)	5K					
Dimming						
Fixed output	0					
1-10V Dimming	1					
DALI Dimming	2					
Switch Dimming	4					
Emergency						
Not Required	0					
3 Hour Facility	1					
3 Hour Self Test	2					
3 Hour Central Test	3					

Example of Code:

TEG-3-595X1195-00-0-3K-0-0

Tegulation:	No Tegulation
Air Handling:	No Air Handling
Colour Temp.:	3000K
Dimming:	Fixed output
Emergency:	Not Required



Tegra 595 x 1195	
Power	70 W
Dimensions	595 x 1195 x 85mm
Weight	15 kg
Installation	SAS130 Ceiling
Voltage	220-240Vac 50/60Hz

Performance	
Power	70 W
Exit Lumens (lm)	3,968 lm
Efficiency	113.4 lm/cW
Colour Rendering	Ra>80
Colour Temperature	3000K / 4000K / 5000K
Dimming	1-10V / DALI / Switch Dimming
Operating Temp.	-40°C to 50°C
Emergency	3 Hour Facility 3 Hour Self Test 3 Hour Central Test
Warranty	5 Years

TEGRA 595 X 595

- Architectural appearance - screwless smooth bezel
- High transmittant frosted lens
- Instant on - no flicker
- Environmentally Friendly - No mercury or lead enters the environment
- No RF and electronic magnetic interference
- Over 50,000 hours life span



The Tegra LED panel is a bespoke modular luminaire designed to fit in to all SAS130 ceilings. The body is made from powder coated steel giving a screwless appearance from under the ceiling. The diffuser is made from high efficiency PMMA which gives the luminaire optimum performance.

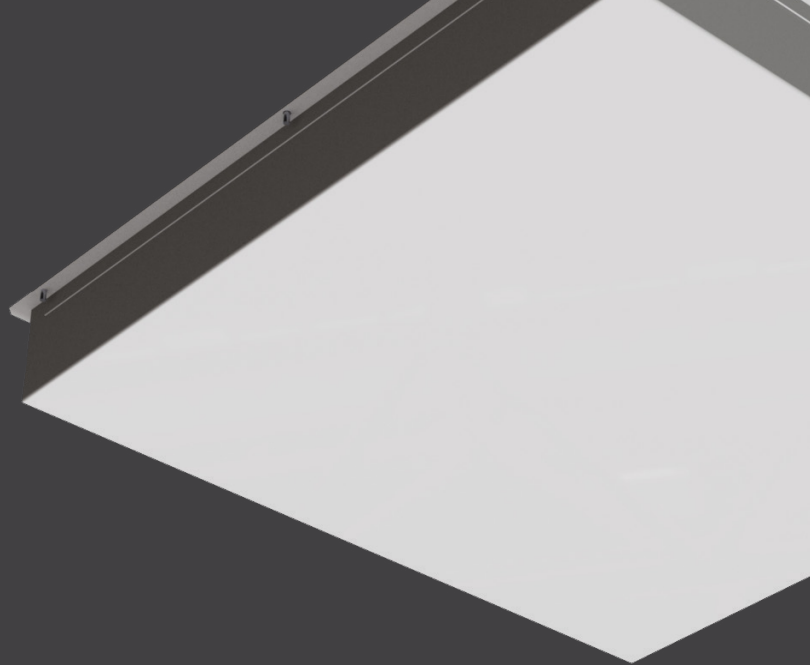
The Tegra has a lifespan of over 50,000 hours and produces an efficacy of 110 lm/W.

TEG-3-595X595		-XX	-X	-XX	-X	-X
Tegulation						
No Tegulation	00					
4mm Tegulation	04					
8mm Tegulation	08					
Air Handling						
No Air Handling	0					
10 Litres per Second	1					
20 Litres per Second	2					
30 Litres per Second	3					
40 Litres per Second	4					
Colour Temperature						
3000K (Warm White)	3K					
4000K (Neutral White)	4K					
5000K (Cool White)	5K					
Dimming						
Fixed output	0					
1-10V Dimming	1					
DALI Dimming	2					
Switch Dimming	4					
Emergency						
Not Required	0					
3 Hour Facility	1					
3 Hour Self Test	2					
3 Hour Central Test	3					

Example of Code:

TEG-3-595X595-00-0-3K-0-0

Tegulation:	No Tegulation
Air Handling:	No Air Handling
Colour Temp.:	3000K
Dimming:	Fixed output
Emergency:	Not Required



Tegra 595 x 595	
Power	35 W
Dimensions	595 x 595 x 85mm
Weight	7.5 kg
Installation	SAS130 Ceiling
Voltage	220-240Vac 50/60Hz

Performance	
Power	35 W
Exit Lumens (lm)	3.968 lm
Efficiency	113.4 lm/cW
Colour Rendering	Ra>80
Colour Temperature	3000K / 4000K / 5000K
Dimming	1-10V / DALI / Switch Dimming
Operating Temp.	-40°C to 50°C
Emergency	3 Hour Facility 3 Hour Self Test 3 Hour Central Test
Warranty	5 Years

sales@led.uk
www.led.uk

LED UK